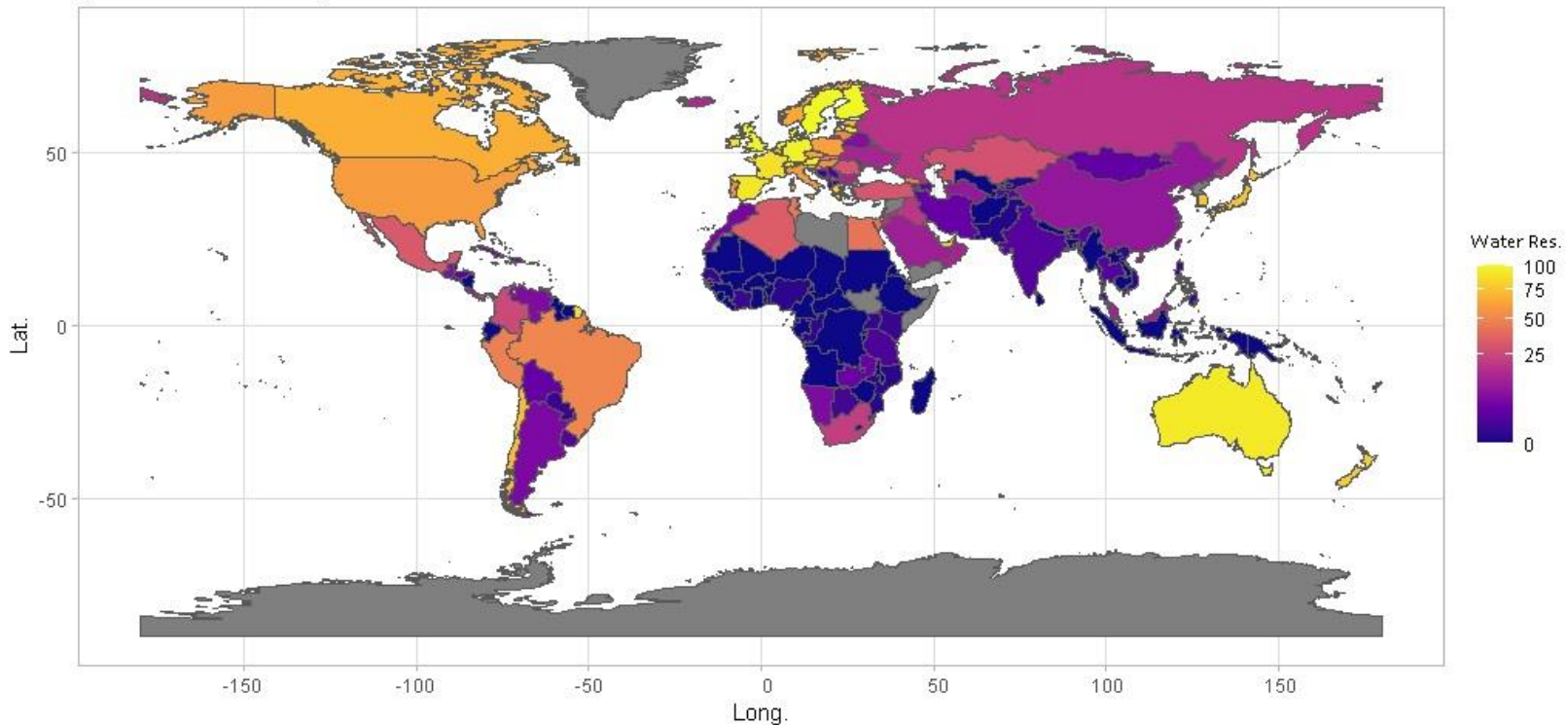


Awareness of Sustainable Use of
National Natural Resources as a
Basis for the Environmental
Protection Systems: Economic
Aspects and the New Global Index of
the Popularity of Environmental
Queries (GIPEQ)

Alexander Shemetev

Sustainable Use of Water Resources (Component of EPI)

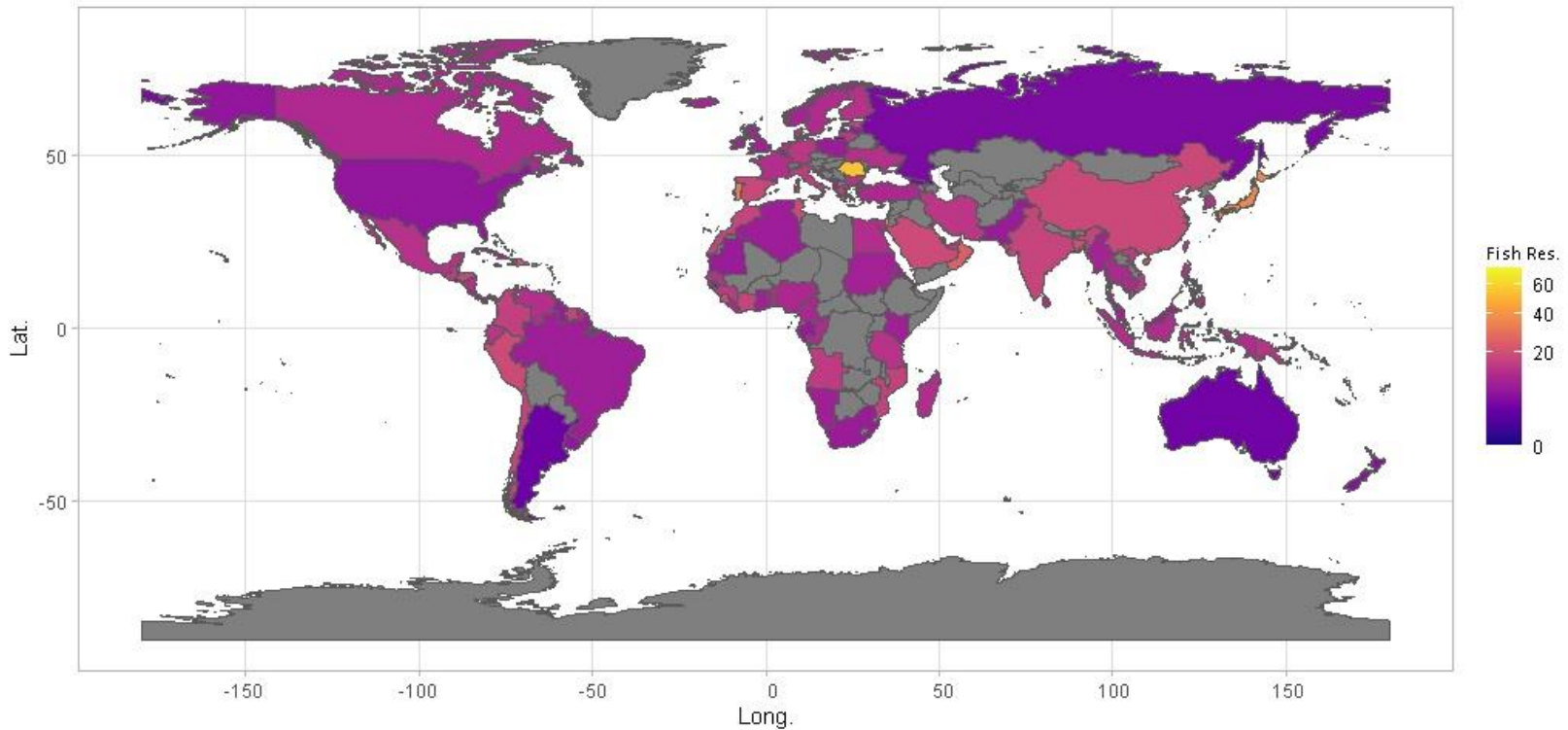
Water Resources of Countries
(Data On 241 Countries)



ITMO

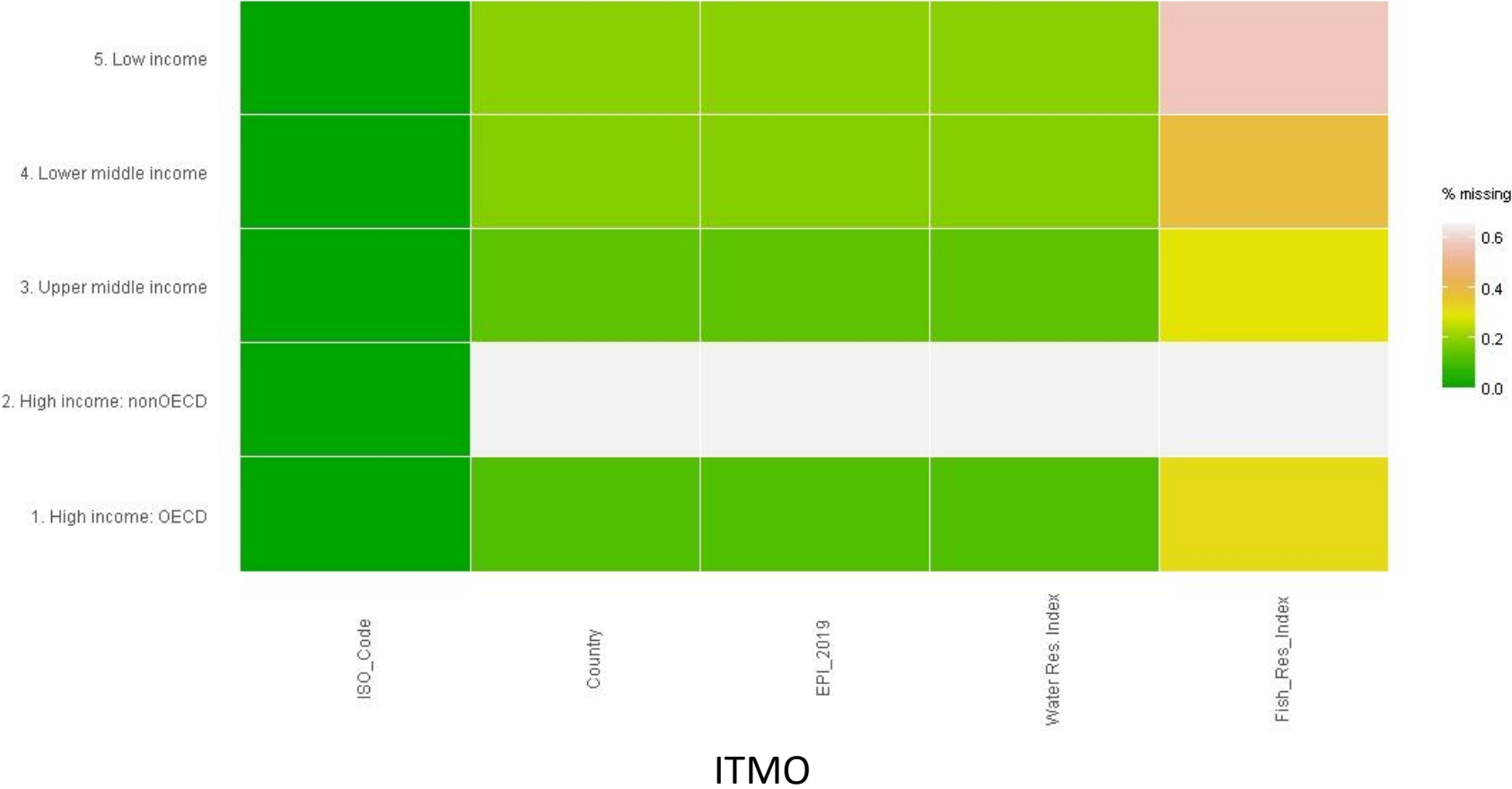
Sustainable Use of Fish Resources (Component of EPI)

Fish Resources of Countries
(Data On 241 Countries)

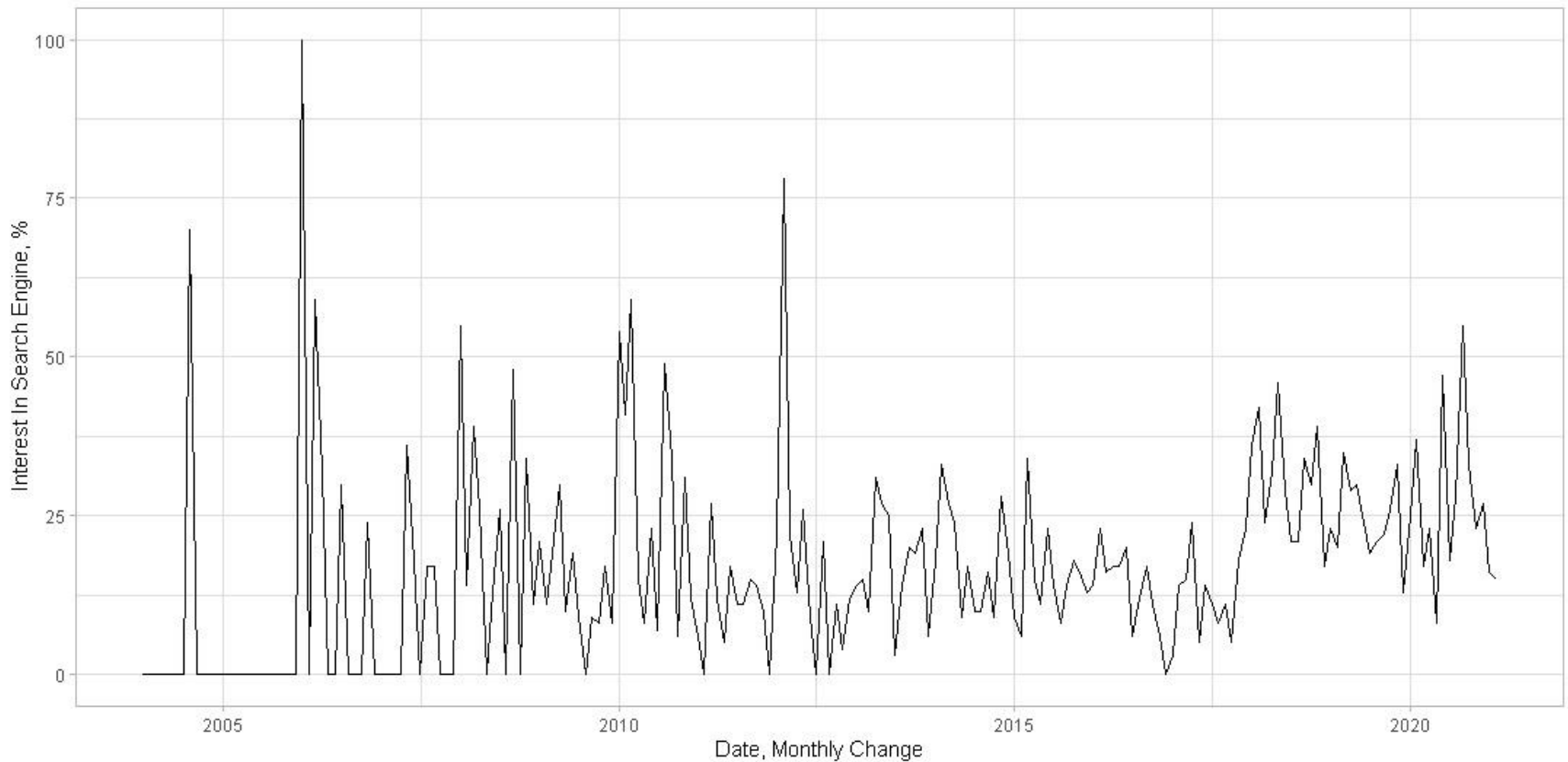


ITMO

The Data Availability of the Components of EPI

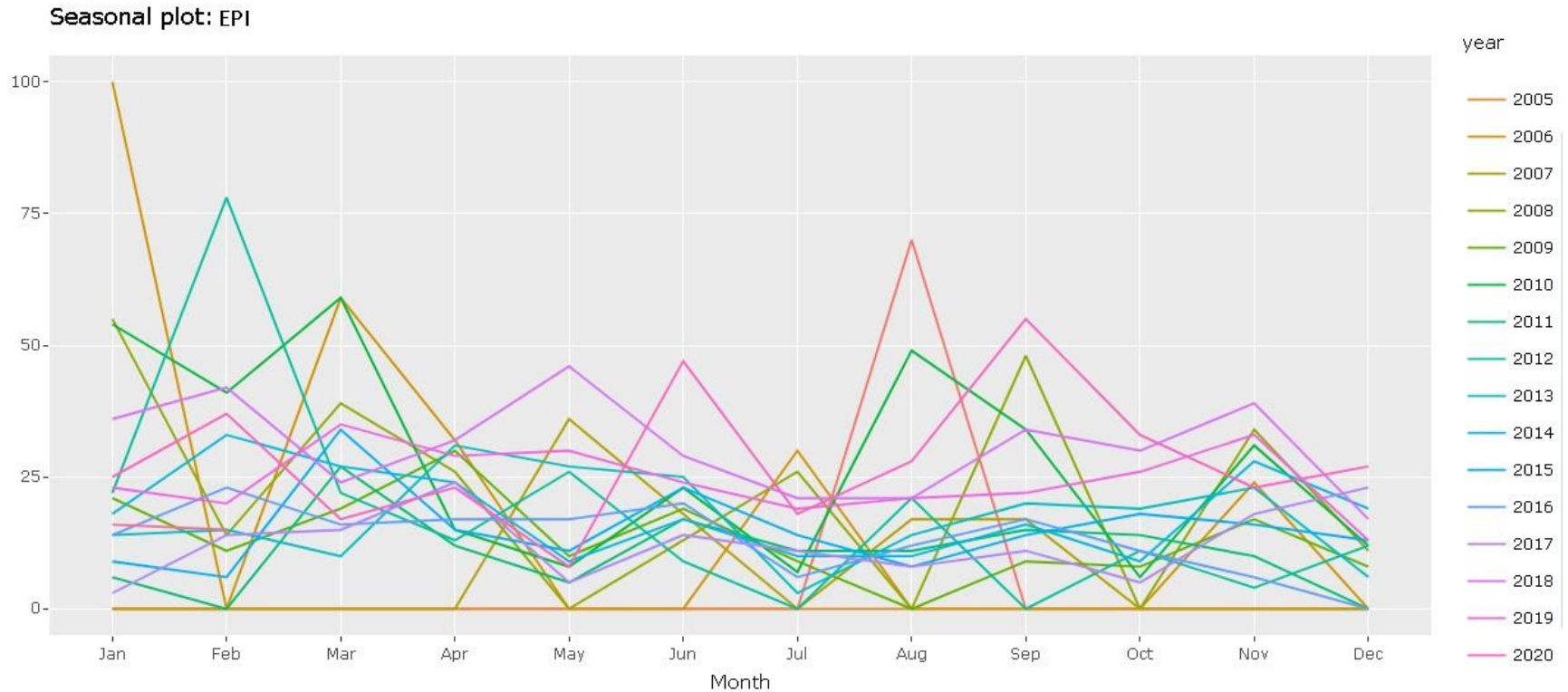


Global Interest to EPI (in the Internet)



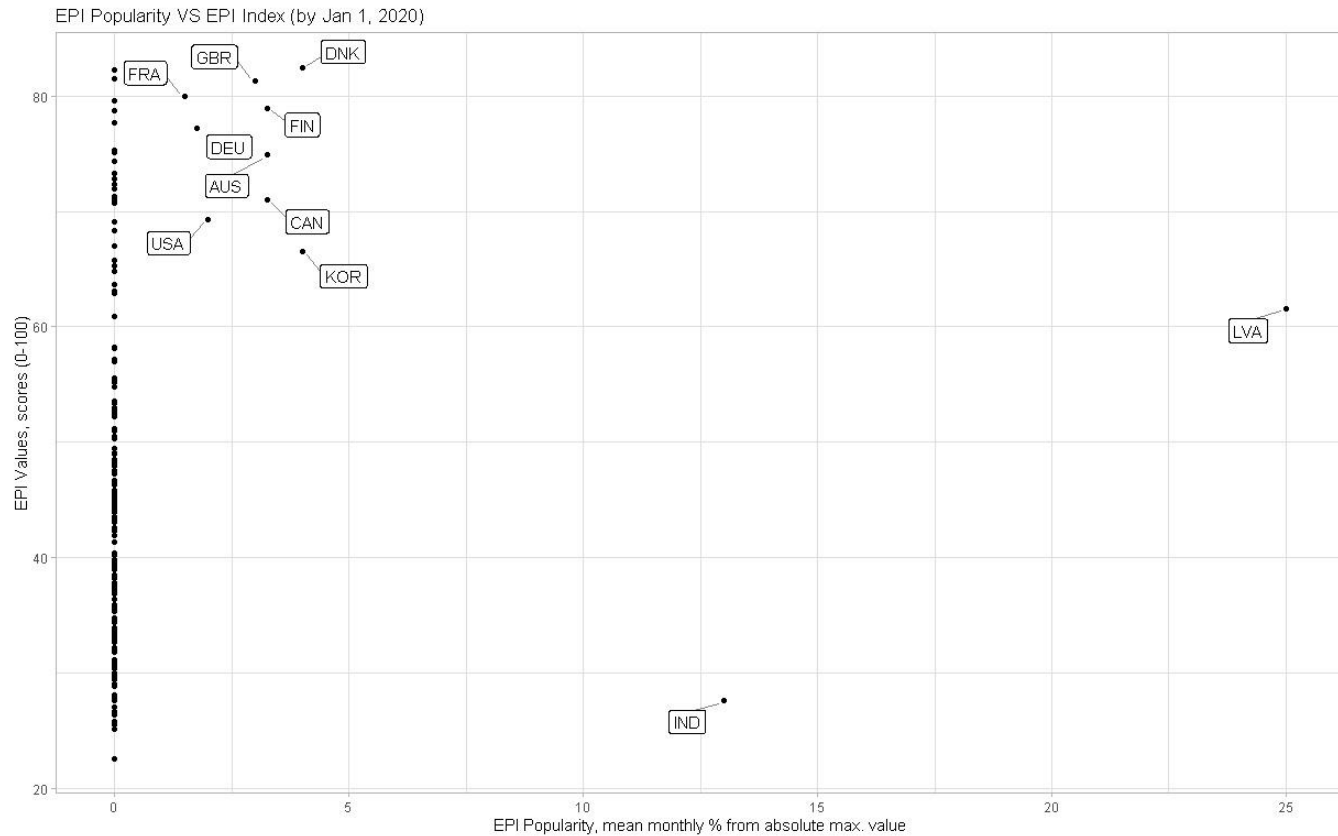
ITMO

Seasonality of the Global Interest to EPI (in the Internet)



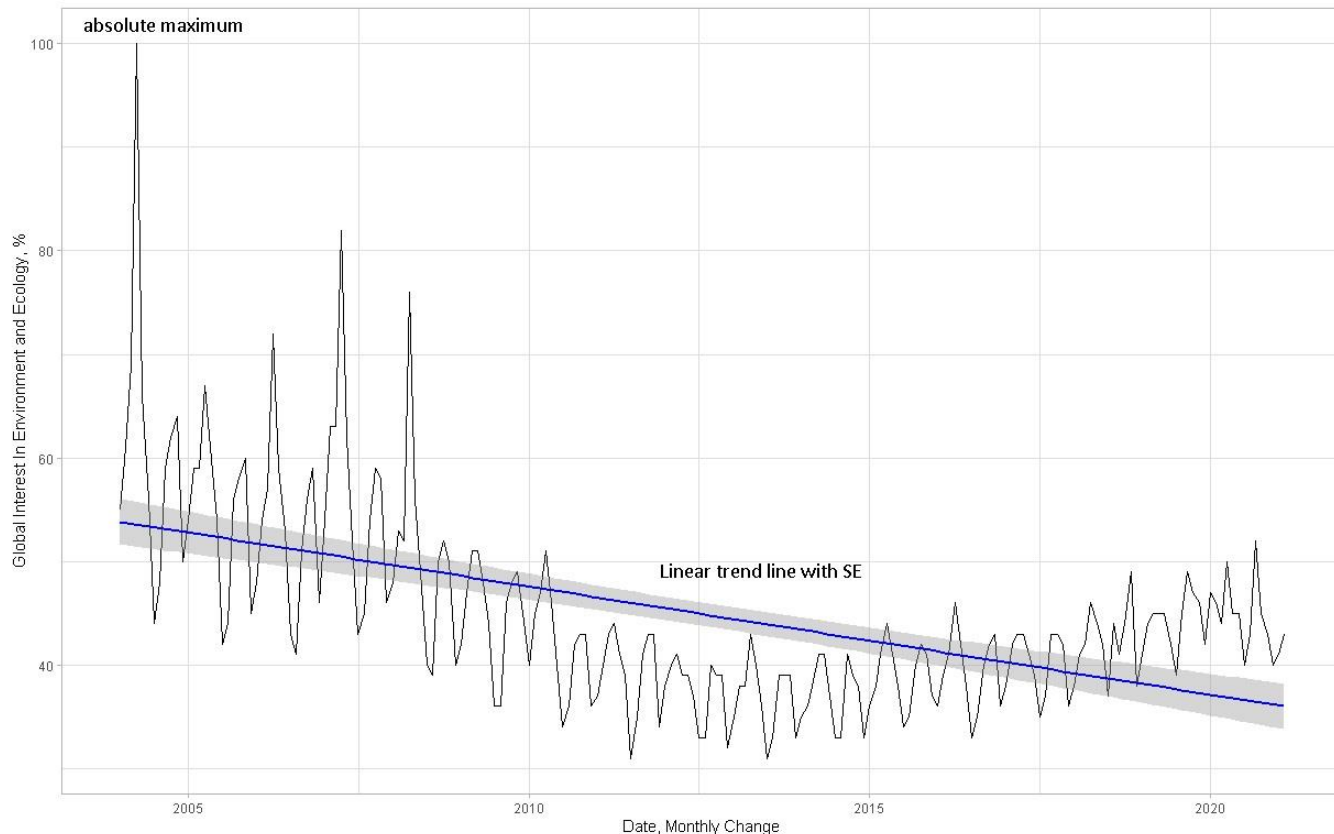
ITMO

EPI Popularity VS EPI Values (in the Internet)



ITMO

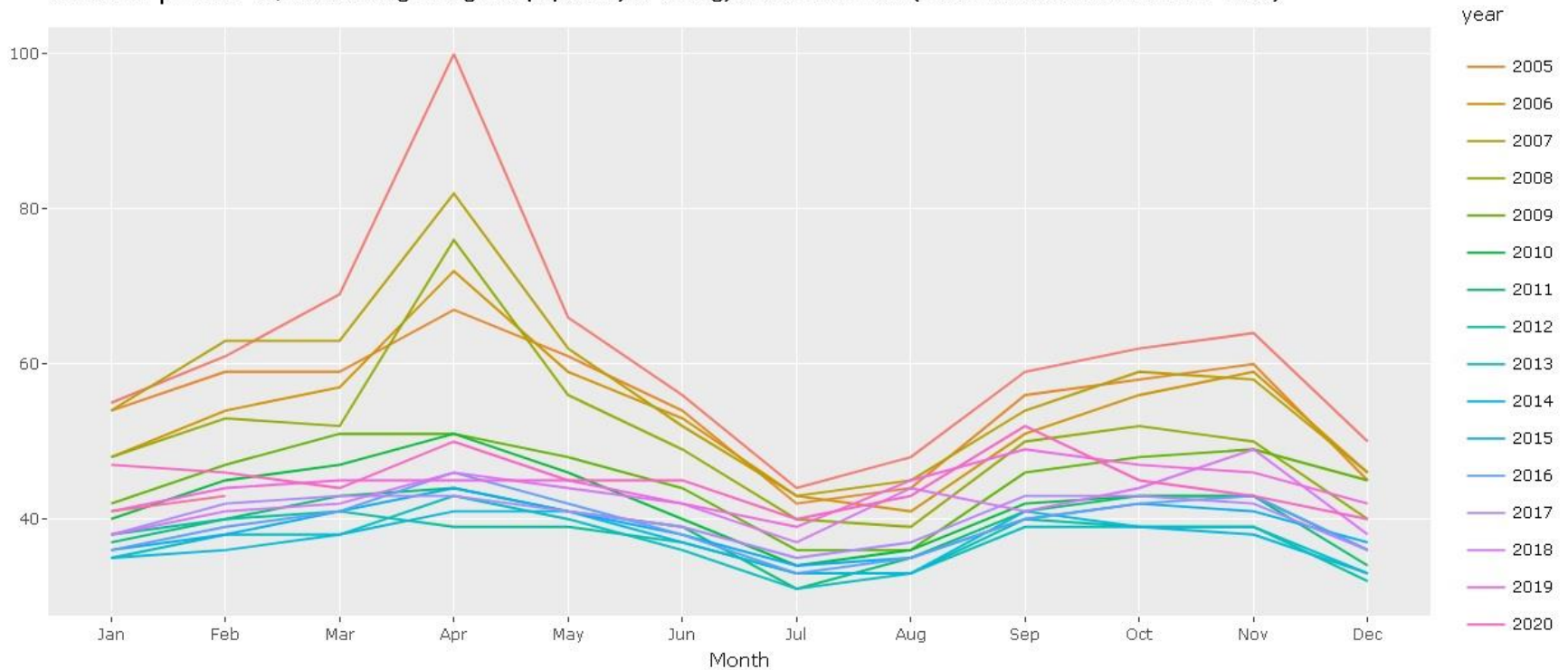
Global Interest in the Environment and Ecology index (GIPEQ) (in the Internet)



ITMO

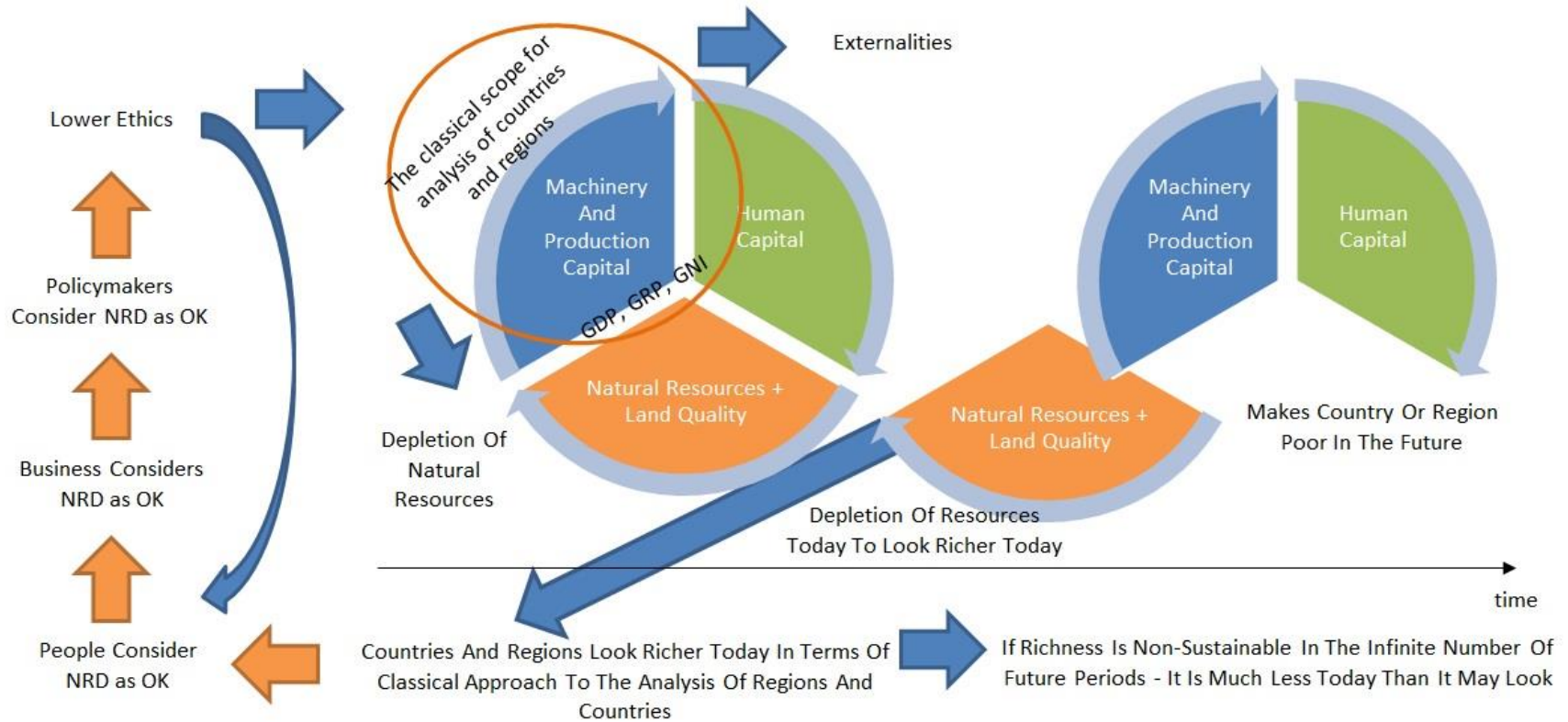
Seasonality of the Global Interest in the Environment and Ecology index (GIPEQ) (in the Internet)

Seasonal plot: GIPEQ index through the global popularity of ecology and environment (in % of the absolute maximum value)



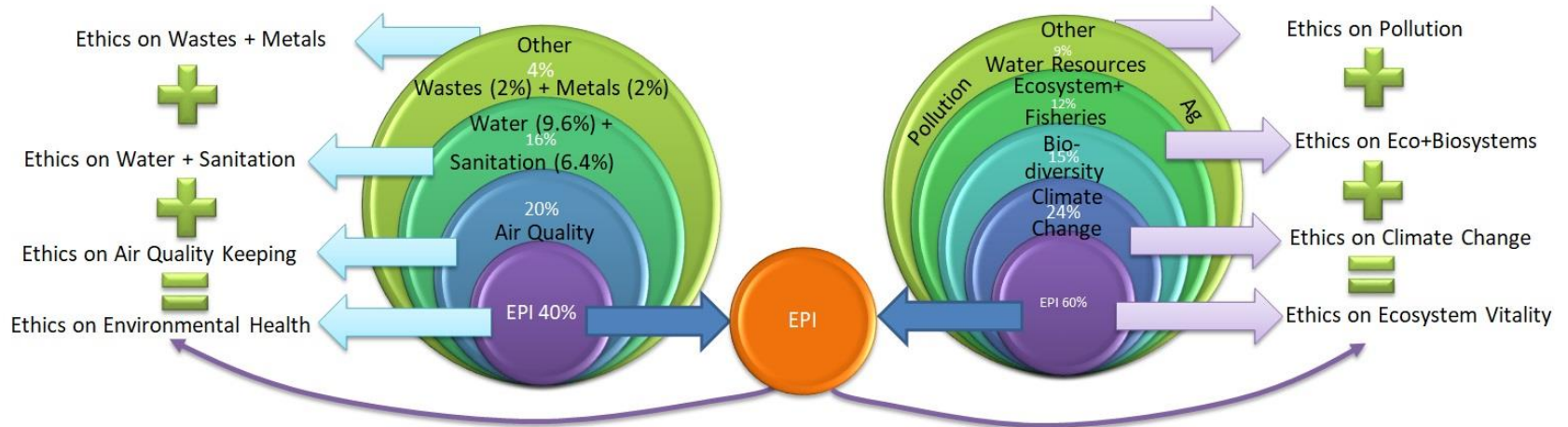
ITMO

Global Index of Ethics: Current Research



ITMO

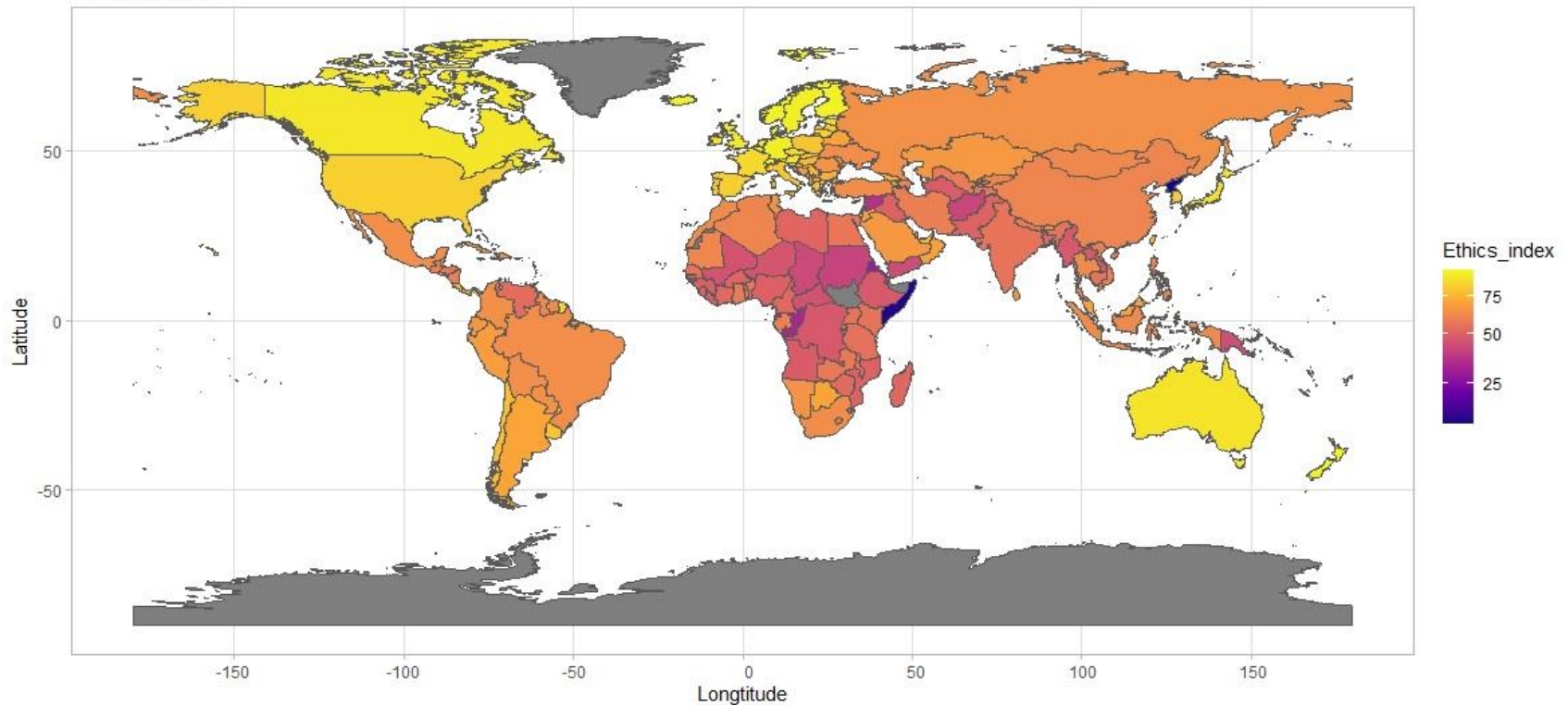
Global Index of Ethics: Component of the Sustainable Use of Resources



ITMO

Global Index of Ethics based on Sustainable use of Env. Res.

National Index of Ethics, 2017-2021
(Scored 0-100)



ITMO